

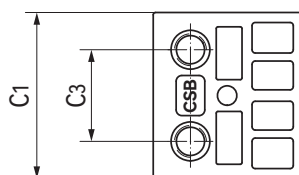
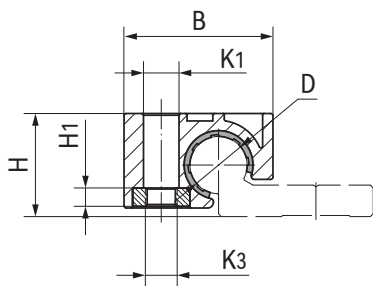
WRU01-P圆导轨滑块 Round rail sliding blocks



产品特性 Product features

- 高强度塑料基座
 - 自润滑、免维护
 - 重量轻、快速装配
 - 可用于WR系列单轨和双轨
 - 抵抗灰尘、耐腐蚀
 - 无噪音、低成本
- High strength plastic housings
 - Maintenance-free, dry-running
 - Fast assembly and light weight
 - For WR single and dual guide rails
 - Resistant dust and corrosion-free
 - Quiet operation and low cost

标准规格 Standard specifications



产品编码 Part No.:

WRU01-10-P

高强度塑料基座
High strength plastic housings

内径 Inner diameter

产品编码 Part No.	D [mm]	公差 Tolerance [mm]	B [mm]	C ₃ [mm]	C ₁ [mm]	H [mm]	H ₁ [mm]	K ₃ [mm]	K ₁ [mm]	静态载荷 Static load			重量 Weight [g]
										Co _y - [N]	Co _z + [N]	Co _z - [N]	
WRU01-10-P	10	+0.083/+0.020	26	16	29	18	3.1	M6	6.2	1200	1200	250	12