

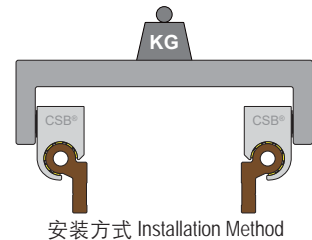
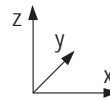
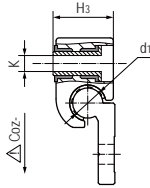
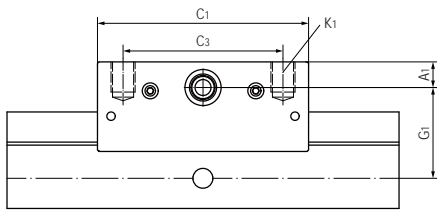
### WRU02加长型圆导轨混合滑块 Round rail hybrid blocks, long design



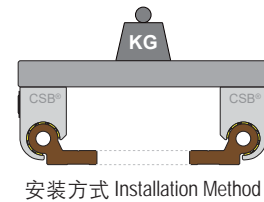
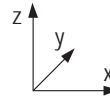
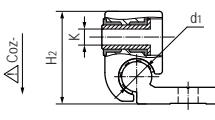
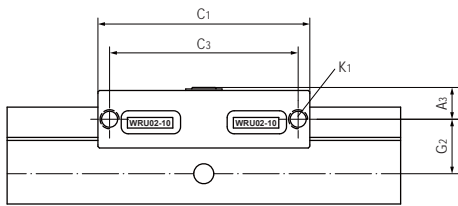
#### 产品特性 Product features

- 滚动与滑动混合加长设计滑块
- 顺畅运动且驱动力比标准型下降45%
- 导向滑动膜标准材料EPB13
- 承载能力是标准型的2倍
- 抵抗灰尘与无噪音运行
- 可用于WR系列单轨和双轨
- 多种安装方式可选
- Rolling and sliding hybrid blocks and long design
- Smooth moving and driving force reduced 45%
- Sliding liners material: EPB13
- Carrying capacity is twice that of the standard type
- Resistant dust and quiet operation
- For WR single and dual guide rails
- Various installation options are available

#### 标准规格 Standard specifications



产品编码 Part No.	d <sub>1</sub> [mm]	公差 Tolerance [mm]	C <sub>1</sub> [mm]	C <sub>3</sub> [mm]	G <sub>1</sub> [mm]	A <sub>1</sub> [mm]	H <sub>3</sub> [mm]	K <sub>1</sub> [mm]	K [mm]	最大静态载荷 Max. static load [N]	Coz- 最大动态载荷 Max. dynamic load [N]	Coz- 重量 Weight [g]
WRU02-10-L	10	+0.088/+0.030	70	62	30.1	8.5	20.5	M6	5	460	1440	67
WRU02-16-L	16	+0.088/+0.030	85	72	37.5	9.5	27.5	M8	6	680	1760	139
WRU02-20-L	20	+0.091/+0.030	100	85	42	11	36	M8	8	960	2480	242



产品编码 Part No.	d <sub>1</sub> [mm]	公差 Tolerance [mm]	C <sub>1</sub> [mm]	C <sub>3</sub> [mm]	G <sub>2</sub> [mm]	A <sub>3</sub> [mm]	H <sub>2</sub> [mm]	K <sub>1</sub> [mm]	K [mm]	最大静态载荷 Max. static load [N]	Coz- 最大动态载荷 Max. dynamic load [N]	Coz- 重量 Weight [g]
WRU02-10-L	10	+0.088/+0.030	70	62	18	10.5	30.6	M6	5	460	1440	67
WRU02-16-L	16	+0.088/+0.030	85	72	19	13.5	41.8	M8	6	680	1760	139
WRU02-20-L	20	+0.091/+0.030	100	85	19	11.8	52	M8	8	960	2480	242