

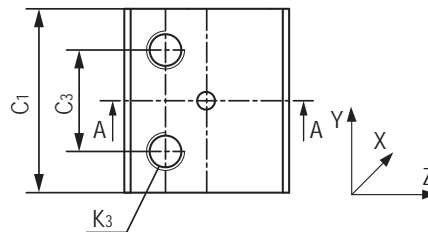
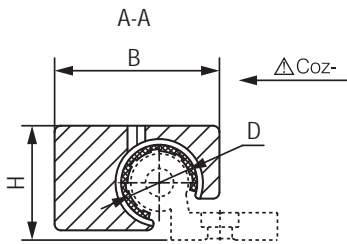
### WRU01圆导轨滑块 Round rail sliding blocks



#### 产品特性 Product features

- 安装铝轴滑动膜MN2
- 自润滑、免维护
- 重量轻、快速装配
- 可用于WR系列单轨和双轨
- 抵抗灰尘
- 无噪音运行
- Fitted MN2 liners for aluminum shafts
- Maintenance-free, dry-running
- Fast assembly and light weight
- For WR single and dual guide rails
- Resistant dust
- Silent operation

#### 标准规格 Standard specifications



产品编码 Part No.:

WRU01-10-MN2-NA-FL

- FL:浮动 Float  
空白 Blank:标准 Standard
- NA:本色 Nature color  
空白 Blank:深灰色 Dark grey
- 材料 Material:MN2  
空白 Blank:EPB13
- 内径 Inner diameter

产品编码 Part No.	D [mm]	公差 Tolerance [mm]	B [mm]	C <sub>3</sub> [mm]	C <sub>1</sub> [mm]	H [mm]	K <sub>3</sub> [mm]	静态载荷 Static load			重量 Weight [g]
								Coz- [N]	Coz+ [N]	Coz- [N]	
WRU01-10-MN2-NA	10	+0.083/+0.020	26	16	29	18	M6	1200	1200	250	20
WRU01-16-MN2-NA	16	+0.102/+0.032	34.5	18	36	27	M8	2100	2100	400	48
WRU01-20-MN2-NA	20	+0.124/+0.040	42.5	27	45	36	M8	3200	3200	500	99
WRU01-10-MN2-NA-FL	10	+0.083/+0.020	26	16	29	18	M6	1200	1200	250	20
WRU01-16-MN2-NA-FL	16	+0.102/+0.032	34.5	18	36	27	M8	2100	2100	400	48
WRU01-20-MN2-NA-FL	20	+0.124/+0.040	42.5	27	45	36	M8	3200	3200	500	99